



Author/Lead Officer of Report:

Diane Owens, South LAC Community Services Manager

Tel: 0114 474 3635

Report of: Community Services Manager

Report to: South Local Area Committee

Date of Decision: 16th March 2022

Subject: Approval of the South LAC Community Plan 2022-23

Is this a Key Decision? If Yes, reason Key Decision:-	Yes	<input checked="" type="checkbox"/>	No	<input type="checkbox"/>
- Expenditure and/or savings over £500,000		<input type="checkbox"/>		
- Affects 2 or more Wards		<input checked="" type="checkbox"/>		
Which Executive Member Portfolio does this relate to? Community Engagement and Governance				
Which Scrutiny and Policy Development Committee does this relate to? Overview and Scrutiny Management Committee				
Has an Equality Impact Assessment (EIA) been undertaken in respect of this decision?	Yes	<input type="checkbox"/>	No	<input checked="" type="checkbox"/>
If YES, what EIA reference number has it been given? (Insert reference number)				
Does the report contain confidential or exempt information?	Yes	<input type="checkbox"/>	No	<input checked="" type="checkbox"/>
If YES, give details as to whether the exemption applies to the full report / part of the report and/or appendices and complete below:-				
<i>“The (report/appendix) is not for publication because it contains exempt information under Paragraph (insert relevant paragraph number) of Schedule 12A of the Local Government Act 1972 (as amended).”</i>				

Purpose of Report:

The Terms of Reference for Local Area Committees (LACs) provide that each LAC must agree a Community Plan outlining priorities for the area of the committee, monitor delivery of that plan and keep it under review, and that the decisions it makes in relation to funding must fit with the priorities set out in the Community Plan and following engagement with the community.

Through public consultation, the South LAC has developed a draft Community Plan that seeks to identify some of the key issues within the area, and develop a series of priorities that will inform the direction of the LAC, and direct the spending of delegated budgets, where the LAC has authority to do so.

This Report recommends the approval of the draft South Community Plan, attached as an Appendix to this report.

Recommendations:

It is recommended that the South Local Area Committee:

Approves the South LAC Community Plan as a reflection of priorities of the area, subject to any amendments being agreed by Members at the meeting on 16th March 2022;

Authorises the Community Services Manager to produce a final version of the Community Plan document, incorporating any amendments approved by the LAC at its meeting of 16th March 2022, and to publish it on the webpages of the South Local Area Committee; and

Notes that future LAC decisions relating to funding must fit with the priorities set out in the Community Plan and following engagement with the community.

Background Papers:

Appendix A – South Community Plan

Lead Officer to complete:-		
1	I have consulted the relevant departments in respect of any relevant implications indicated on the Statutory and Council Policy Checklist, and comments have been incorporated / additional forms completed / EIA completed, where required.	Finance: Kayleigh Inman
		Legal: Andrea Simpson
		Equalities: Adele Robinson
<i>Legal, financial/commercial and equalities implications must be included within the report and the name of the officer consulted must be included above.</i>		
2	Head of Service who approved submission:	Nik Hamilton
3	LAC Chair consulted:	Cllr Simon Clement-Jones
4	I confirm that all necessary approval has been obtained in respect of the implications indicated on the Statutory and Council Policy Checklist and that the report has been approved for submission to the Decision Maker by the Head of Service indicated at 2. In addition, any additional forms have been completed and signed off as required at 1.	
	Lead Officer Name: Diane Owens	Job Title: South LAC Community Services Manager
Date: 8 th March 2022		

1. PROPOSAL

- 1.1 The Terms of Reference for Local Area Committees (LACs) provide that each LAC must agree a Community Plan setting priorities for the area of the committee, monitor delivery of that plan and keep it under review, and that the decisions it makes in relation to funding must fit with the priorities set out in the Community Plan and following engagement with the community.

Through public consultation, the South LAC has developed a draft Community Plan that seeks to outline some of the key issues within the area, and develop a series of priorities that will inform the direction of the LAC, and direct the spending of delegated budgets, where the LAC has authority to do so.

Individual members of the LAC have played an active role in developing the content of the Plan, but the LAC must make a decision to approve the Plan as a whole as a reflection of the priorities of the South area.

This Report recommends the approval of the draft South Community Plan, attached as an Appendix to this report.

The Community Plan seeks to identify specific priorities and develop a series of actions, whereby the LAC can work with residents; businesses; community organisations; Council departments and other statutory organisations to effect change.

The Community Plan is intended to be realistic in terms of what can be achieved within the timescales, having regard to financial, legal and logistical implications.

2. HOW DOES THIS DECISION CONTRIBUTE?

Local Area Committees directly support the Communities and Neighbourhoods and Our Council commitments in the 'Our Sheffield: One Year Plan' but to be effective they need to have the capability to respond quickly to emerging local issues.

3. HAS THERE BEEN ANY CONSULTATION?

- 3.1 The Community Plan has been developed through community consultation that has comprised of an online survey through the Council's Citizenspace platform; a paper-based survey for those less digitally-enabled; engagement activity with local businesses and representative organisations and in-person meetings.

Partner organisations and Council departments that have been identified as offering potential solutions to some of the issues identified have also been consulted, to establish whether suggestions can be realistically implemented.

4. RISK ANALYSIS AND IMPLICATIONS OF THE DECISION

4.1 Equality of Opportunity Implications

Decisions need to consider the requirements of the Public Sector Equality Duty contained in Section 149 of the Equality Act 2010.

This is the duty to have due regard to the need to:

- Eliminate discrimination, harassment, victimisation and any other conduct that is prohibited by or under the Act;
- Advance equality of opportunity between persons who share a relevant protected characteristic and persons who do not share it;
- Foster good relations between persons who share a relevant protected characteristic and persons who do not share it.

The Equality Act 2010 identifies the following groups as a protected characteristic: age; disability; gender reassignment; marriage and civil partnership; pregnancy and maternity; race; religion or belief; sex and sexual orientation.

- 4.1.1 The overall impact of this decision is likely to be positive and not disproportionate from an equality, diversity and inclusion perspective. In developing a Community Plan, local communities have been given the opportunity for a greater say in local decision making for services which impact their daily lives.

The devolution of responsibilities will improve inclusion for local people and the work of the Sheffield Equality Partnership will support and enhance the approach from a citywide and underserved communities' perspective.

However, in order to ensure this approach takes into account people who share protected characteristics under the Public Sector Duties the Local Area Committee Community Plan will be supported by appropriate equality monitoring of budget.

An Equality Impact Assessment (EIA 916) was previously carried out in respect of the establishment of Local Area Committees.

4.2 Financial and Commercial Implications

- 4.2.1 There are no additional financial implications. This report relates to the decision to approve the Community Plan. The decision to allocate specific budgets to the Local Area Committees has already been made.

Procurement of supplies and/or services will be carried out in line with Standing Orders.

4.3 Legal Implications

- 4.3.1 The LAC must operate in accordance with its Terms of Reference, approved as a change to Council's Constitution by Full Council at its meeting on 18th March 2021. The Terms of Reference provide that each LAC must agree a Community Plan setting priorities for the area of the committee, monitor delivery of that plan and keep it under review, and that the decisions it makes in relation to funding must fit with the priorities set out in the Community Plan and following engagement with the community.

4.4 Other Implications

- 4.4.1 None

5. ALTERNATIVE OPTIONS CONSIDERED

- 5.1 None. A key element in establishing LACs is the principle that each LAC will develop a Community Plan.

6. REASONS FOR RECOMMENDATIONS

- 6.1 The proposal to approve the South LAC Community Plan is recommended on the basis that the Plan provides a clear framework in how the LAC will direct its resources to address key issues identified through community consultation.



South LAC Community Plan

DRAFT v0.02

Contents

Page 24

1. What are Local Area Committees?
2. About the South Local Area
3. Meet the South LAC Committee
4. Community Conversations
5. Our Action Plan
6. Next Steps



1. What are Local Area Committees?



Listening – we will listen to local communities to understand local issues and concerns



Partnerships – we will develop strong partnerships, working with communities and partners, including the voluntary, community & faith sector



Coordination – we will help ensure a more co-ordinated approach to address local issues



Celebrate – we will help celebrate and promote local news, activities and achievements

Sheffield City Council has established 7 Local Area Committees (LACs) across the city. The LACs are a way for local people to get involved in making a difference to their communities.

LACs are led by local Councillors and each LAC covers 4 electoral wards.

LACs are about listening to local people and organisations and working in partnership to respond to local concerns. They will provide opportunities to influence decision making, share opinions and contribute to positive change in communities.

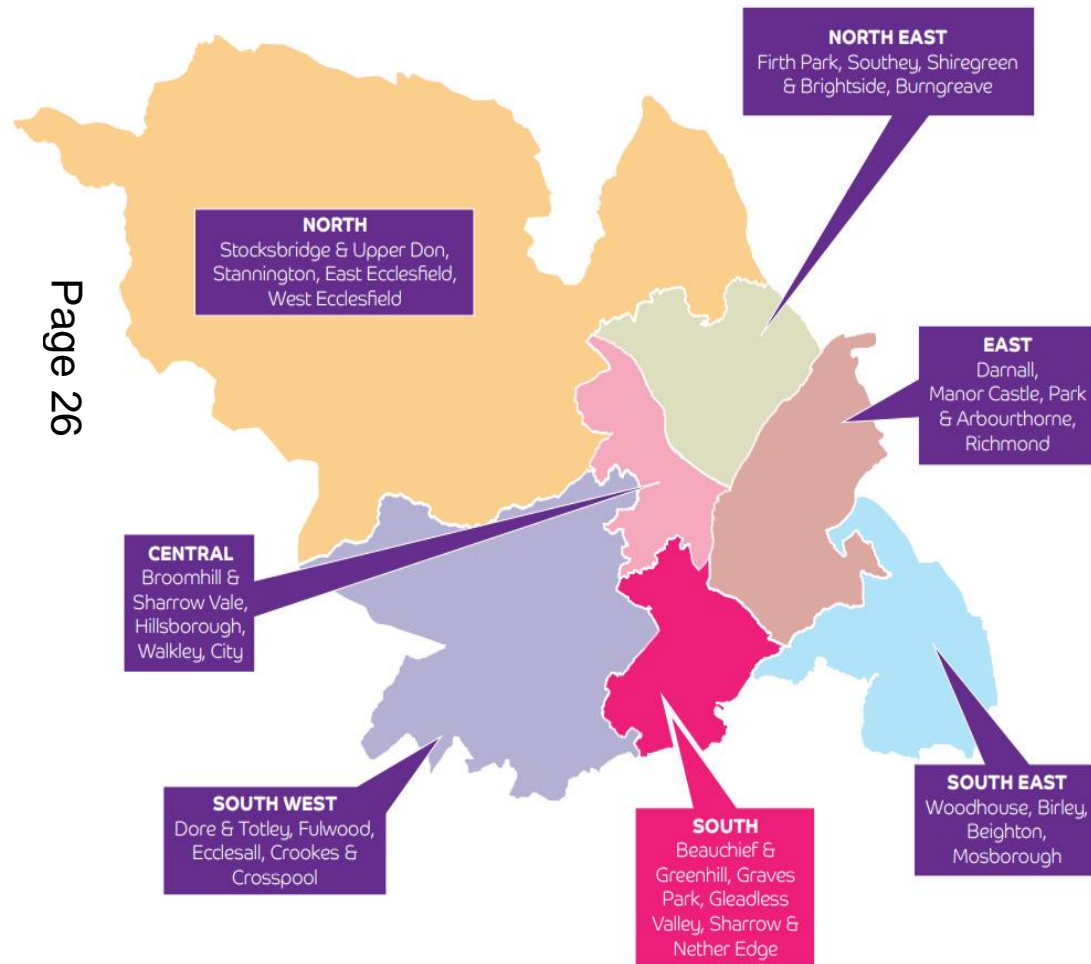
A number of powers and budgets have already been devolved to LACs to help them respond to local issues and concerns. The plan is for these devolved powers to evolve over time.

Each LAC has now developed a Community Plan to show how we plan to respond to the concerns local people and organisations have raised.

Further details about LACs and how you can get involved can be found here - [Local Area Committees Homepage](#).

2. About the South Local Area

Page 26



Each LAC covers 4 Electoral Wards, the South LAC covers:

- Beauchief & Greenhill Ward
- Gleadless Valley Ward
- Graves Park Ward
- Sharrow & Nether Edge Ward

This includes the following neighbourhoods:

Woodseats, Gleadless Valley, Heeley, Meersbrook, Meadowhead, Sharrow, Nether Edge, Beauchief, Greenhill, Herdings, Norton, Norton Lees, Lowedges, Batemoor, Jordanthorpe

2. About the South Local Area

The following pages give a brief overview of some key statistics for the South LAC.

Population

There are 81,543 people living in the South LAC area

Communities & Environment

78.5% of people are 'satisfied with their neighbourhood', this is similar to the England average 79.3%

Income

26% of children aged 0-19 are in relative low-income families, compared with 19% across England

Heating

3% of households lack central heating, this is comparable with the figure for England

Disability

19% of people have a limiting long-term illness, compared with 18% across England



Education & Training

22% of people have no qualifications, this is comparable with the figure for England

Employment

37% people aged 16-74 are in full-time employment, compared with 39% across England

Access & Transport

36% of households have no car, compared with 26% across England

Crime & Safety

The overall crime rate is higher than the average across England

2. About the South Local Area

Age

5% 0-15 years

65.5% Working Age
(20-50 years)

15.6% Age 65+



Page 28

Deprivation

31.9% of the population live in the 20% most deprived areas in England.



Data based on the Indices of Multiple Deprivation (IMD) 2019

Religion / belief

48% Christian

8.7% Muslim

1% Hindu

0.6% Buddhist

1.2% - other religion / faith

33.8% no religion



Health

29% of people are living in health deprivation 'hotspots' Indices of Deprivation 2015



Ethnicity

78.5% White British

18.2% Black, Asian, Ethnic Minority

3.3% White (Non - British)



Housing

57.1% are homeowners

21% Rent from the council

3.6% Rent from other social landlord

16% are private renting

2.3% other rented









Employment

The main industry sectors are health and social work, retail and education.



3. Meet the South LAC Committee

The South Local Area Committee is made up of twelve elected Councillors, representing the four Council wards included within the South LAC.

Beauchief & Greenhill		Graves Park	
	<p>Simon Clement-Jones – South LAC Chair Email: simon.cj@councillor.sheffield.gov.uk</p>		<p>Ian Auckland Email: ian.auckland@councillor.sheffield.gov.uk</p>
	<p>Sophie Thornton – South LAC Vice Chair Email: sophie.thornton@councillor.sheffield.gov.uk</p>		<p>Steve Ayris Email: steve.ayris@councillor.sheffield.gov.uk</p>
	<p>Richard Shaw Email: richard.shaw@councilor.sheffield.gov.uk</p>		<p>Sue Auckland Email: sue.auckland@councillor.sheffield.gov.uk</p>

Page 29

3. Meet the South LAC Committee

Gleadless Valley		Sharrow & Nether Edge	
	<p>Alexi Dimond Email: alexi.dimond@councillor.sheffield.gov.uk</p>		<p>Alison Teal Email: alison.teal@councillor.sheffield.gov.uk</p>
	<p>Cate McDonald Email: cate.mcdonald@councillor.sheffield.gov.uk</p>		<p>Maroof Raouf Email: maroof.raouf@councillor.sheffield.gov.uk</p>
	<p>Paul Turpin Email: paul.turpin@councillor.sheffield.gov.uk</p>		<p>Peter Garbutt Email: peter.garbutt@councillor.sheffield.gov.uk</p>

All the Councillors can be contacted either via their email addresses or by calling the Town Hall on 0114 2735380

The South LAC Team & Keeping in Touch

- Nik Hamilton, Head of Service, Communities
- Diane Owens, Community Services Manager, South LAC
- Sarah Lucas, Community Services Officer, South LAC
- Jason Gallagher, Project Support Officer, South LAC

The team can be contacted by email on SouthLAC@sheffield.gov.uk or by telephone on 0114 474 3635

Page 31

The South LAC webpage can be found via <https://www.sheffield.gov.uk/home/your-city-council/south-local-area-committee>

Social media links can also be found on:-

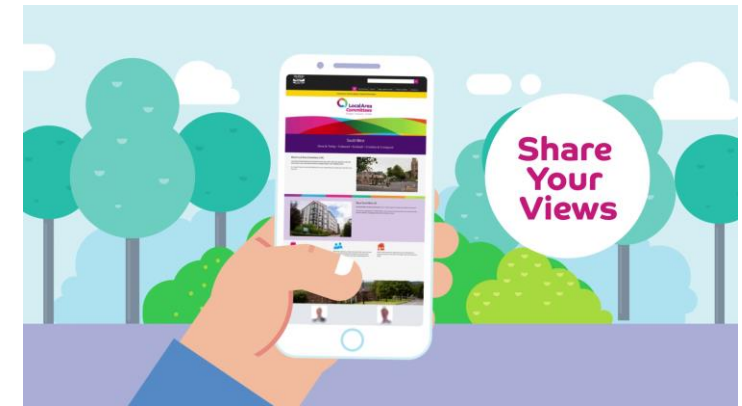
Facebook - <https://www.facebook.com/southsheffield>

Twitter here – <https://twitter.com/SouthSheffield>

Next Door App here - <https://nextdoor.co.uk/agency-detail/england/south-yorkshire/sheffield-city-council/>

4. Community Conversations

Through our engagement activities during 2021-22 we have spoken with over 2,000 people, this has included:



Online Citywide Survey

This ran from August to October 2021 and paper copies were also made available. 976 responses were received for South LAC

South LAC Public Meetings

Held in Gleadless Valley Methodist Church in October 2021 and online in January 2022

Talking to Local Businesses

Elected Members & the LAC Team spoke to local businesses in Sharrow, Woodseats and Gleadless Valley

In Person Surveys / Conversations

Led by 7 local VCFS (voluntary, community and faith sector) organisations
These groups spoke to over 665 people

Drop ins at local Libraries

Informal sessions supported by LAC Team and local Elected Members

Sheffield Equality Partnership

Citywide targeted work has been undertaken with communities who are less likely to have their voice heard

These conversations will continue, as we want to work with local people and organisations as we develop and deliver the priorities and projects outlined in our plan.

4. Community Conversations

From our community conversations these are some of the things people have spoken to us about:

Some of the things people feel positive about:

- Sense of community
- Local shopping centres and businesses
- Local amenities
- Local environment - greenery and trees
- Parks and open spaces

Some of the areas for improvement:

- Litter
- Activities for young people
- Parking
- Traffic calming and speeding
- Crime and community safety
- Community activities

A more detailed presentation on the findings from our community engagement is available, please get in touch if you would like a copy.



5. Our Action Plan - Key Themes

Based on our community engagement and reviewing some key data, our community plan is based around the following 5 key themes.



Page 34



1. Environment & Green Spaces

2. Transport & Highways

3. Community Safety & Crime

4. Communities

5. Employment & Skills

6. Children, Young People & Families



Priority 1: Environment & Green Spaces

Outcome / Impact	Action	Issue	Leads	Timescales
<ul style="list-style-type: none"> Reduced levels of litter and fly tipping Cleaner / more attractive environment 	<p>We will work with Environmental Protection Services to identify the top 10 fly tipping hot spot sites in the area. We will develop a plan for each site to encourage positive behaviour and prevent further fly tipping, using a range of approaches e.g. targeted enforcement measures, CCTV and community engagement</p>	<p>Fly tipping Litter</p>	<p>Environmental Protection Services</p>	<p>2022-23</p>
<ul style="list-style-type: none"> Reduced levels of litter and fly tipping Cleaner / more attractive environment Increased use of area by local community 	<p>We will work with Council services and the community to clean up “the Lumb” area in Gleadless Valley.</p> <p>We will develop an action plan to identify the actions that need to be taken both in terms of cleaning up the site and community engagement and longer term prevention, to include enhancing biodiversity.</p>	<p>Fly tipping Litter</p>	<p>Housing Woodlands Team Sheffield Litter Pickers Amey</p>	<p>December 2022</p>
<ul style="list-style-type: none"> Reduced levels of graffiti Cleaner / more attractive environment 	<p>We will work with Environmental Protection Services to identify the top graffiti hot spot sites in the area, We will develop an action plan for each site to encourage positive behaviour and to try and prevent further graffiti incidents in the future.</p>	<p>Graffiti</p>	<p>Environmental Protection Services</p>	<p>2022-23</p>
<ul style="list-style-type: none"> Reduced levels of graffiti in key targeted areas Cleaner / more attractive environment 	<p>We explore the option of working with young people to develop a project to target some of the main graffiti sites in the area. For example this could involve bringing in a local skilled graffiti artist to work with local young people to produce street art at a number of locations.</p>	<p>Graffiti</p>	<p>Youth Services VCFS*</p>	<p>December 2022</p>



Priority 1: Environment & Green Spaces

Outcome / Impact	Action	Issue	Leads	Timescales
<ul style="list-style-type: none"> Reduced levels of litter across the LAC area Cleaner streets 	<p>We will continue to work with partners and communities to identify hot spots and respond to concerns around litter and street cleaning both in residential areas and local parks and green spaces . This will include exploring options to encourage positive behaviour, maintenance of existing sites and installing additional bins where required.</p> <p>We will also continue to support the excellent litter picking work which is undertaken by local community organisations and volunteers.</p>	<ul style="list-style-type: none"> Litter Street cleaning Bins 	<ul style="list-style-type: none"> Highways Amey Parks & Countryside 	2022-23
<ul style="list-style-type: none"> More attractive environment Increased bio-diversity 	<p>We will explore opportunities to support the Councils creation of more nature corridors in the area, including wildflower planting on roadside verges and developing local green spaces to enhance biodiversity.</p>	<ul style="list-style-type: none"> Climate / Clean Air Biodiversity Street scene 	<ul style="list-style-type: none"> Parks & Countryside Highways 	2022-23
<ul style="list-style-type: none"> More attractive environment Increased bio-diversity 	<p>We will work with our Parks & Countryside Service, “friends of groups” and local community organisations to support work towards either Green Flag Status or Sheffield Standard, as appropriate for parks and green spaces in the area. We will also support work to upgrade and improve “blue / green infrastructure” e.g. local rivers.</p> <p>The 2 actions above (and the action relating to “The Lumb”) link to the councils development of a Nature Emergency Action Plan (NEAP) and our statutory obligations under the Environment Act 2021.</p>	<ul style="list-style-type: none"> Climate / Clean Air Biodiversity Parks & Open Spaces 	<ul style="list-style-type: none"> Parks & Countryside VCFS* “Friends of” groups 	2022-23

Priority 2: Transport & Highways



Outcome / Impact	Action	Issue	Leads	Timescales
<ul style="list-style-type: none"> Reduced complaints about parking from local community / business 	<p>We will continue to work with our Parking Services Team and South Yorkshire Police to improve our approach to identifying and responding to hot spots and local concerns about inappropriate / illegal parking.</p> <p>To include parking on grass verges, blocked pavements and cycle ways.</p>	Parking	Parking Services SY Police Housing	2022-23
<ul style="list-style-type: none"> Improved satisfaction with public transport 	<p>We will collate and share the feedback we received about Public Transport with South Yorkshire Mayoral Combined Authority (SYMCA) and potentially local providers, as well as the Transport & Highways Committee and Co-operative Executive Member so this information can inform future service delivery and planning.</p> <p>This will include feedback about services and also the availability of timetable information at bus stops.</p>	Public Transport	SYMCA Local Transport Providers	2022-23
<ul style="list-style-type: none"> Increased levels of active travel Improved health and wellbeing 	<p>We will continue to support the use of public transport and active travel (e.g. walking and cycling) to ease congestion on roads.</p> <p>We will link to citywide work including “Connecting Sheffield” and “Move More” and the trialling of Nether Edge and Sharrow as an “Active Neighbourhood”.</p>	Active travel	Highways	2022-23
<ul style="list-style-type: none"> Improved access routes 	<p>We will work with Highways and Amey to ensure public rights of way are well maintained and accessible e.g. cutting back overgrown hedges, recognising the implications for communities, including those with mobility issues or visual impairment</p>	Blocked access routes	Highways Amey	2022-23



Priority 3: Crime & Community Safety

Outcome / Impact	Action	Issue	Leads	Timescales
<ul style="list-style-type: none">Reduce levels of speedingSafer roads	<p>We will work with Highways and South Yorkshire Police to install a VAS (Vehicle Activated (speed) Sign) in each of the 4 Wards in the LAC area.</p> <p>Each VAS will be rotated around different priority locations across the area, with the selected locations being informed by community feedback.</p>	<p>Speeding</p> <p>Traffic calming</p>	<p>SY Police</p> <p>Highways</p>	<p>2022-23</p>
<ul style="list-style-type: none">Reduce levels of speedingSafer roads	<p>Where appropriate, we will pursue the installation of traffic calming measures such as 20mph zones, physical road safety measures and cameras.</p> <p>This could include the funding of projects through Ward allocations of CIL (Community Infrastructure Levy)</p> <p>We will also support any local campaigns to raise awareness of road safety including those linked to local schools.</p>	<p>Speeding</p> <p>Traffic calming</p>	<p>SY Police</p> <p>Highways</p>	<p>2022-23</p>
<ul style="list-style-type: none">Reduce levels of speedingSafer roads	<p>We will support our local Police Team to introduce a Community Speed watch project, to enable local community volunteers to support the Police team in undertaking speed watch activities at priority locations.</p>	<p>Speeding</p> <p>Traffic calming</p>	<p>SY Police</p> <p>Highways</p>	<p>December 2022</p>



Priority 3: Crime & Community Safety

Outcome / Impact	Action	Issue	Leads	Timescales
<ul style="list-style-type: none"> Reduced levels of crime / ASB Increased feelings of safety 	<p>We will work with our local Police Team and partners, including the community and voluntary sector to support the setting up of 3 Neighbourhood Action Groups (NAGs) for priority areas.</p> <p>The NAGs will work in partnership to develop an action plan to respond to concerns around crime and ASB (anti social behaviour).</p> <p>This can include serious organised crime and exploitation and issue of vulnerability.</p>	<ul style="list-style-type: none"> Crime Police Presence & Patrol ASB 	<p>SY Police</p> <p>Housing</p> <p>VCFS*</p> <p>TARAs**</p> <p>Amey</p>	<p>2022-23</p>
<ul style="list-style-type: none"> Reduced levels of crime / ASB Increased feelings of safety 	<p>We will work with our local Police Team and partners to encourage people to report crime in their area, including road safety incidents.</p> <p>Where possible we will support partners to ensure feedback and reassurance is given to individuals and communities.</p>	<ul style="list-style-type: none"> Crime ASB 	<p>SY Police</p> <p>Housing</p> <p>VCFS*</p> <p>TARAs**</p>	<p>2022-23</p>

Priority 4: Communities



Outcome / Impact	Action	Issue	Leads	Timescales
<ul style="list-style-type: none"> Increase in community engagement and capacity Increase in community events and activities 	<p>We will explore the option of providing some additional community development capacity to help support and develop community led activities and community engagement using strength based approaches to working with people and organisations.</p> <p>This could include work around places to meet and socialise and would be targeted in the areas of highest need</p>	<p>Lack of local amenities / assets</p> <p>Lack of community events / celebrations</p>	<p>VCFS*</p>	<p>2022-23</p>
<ul style="list-style-type: none"> Increased awareness of local activities and volunteering opportunities 	<p>We will work with local community and voluntary sector organisations to develop a project to encourage and promote the use of Sheffield Directory as way of capturing VCFS (voluntary, community and faith sector) activities, including volunteering opportunities.</p> <p>This will include looking at ways to share this information with those who are digitally excluded.</p> <p>VCFS groups and TARA's (tenants and residents associations) and People Keeping Well (PKW) organisations can help to share this information with their communities</p>	<p>Access to information about local activities</p>	<p>VCFS*</p> <p>TARAs**</p>	<p>2022-23</p>

Page 40

Priority 5: Employment & Skills



Outcome / Impact	Action	Issue	Leads	Timescales
<ul style="list-style-type: none"> Lower levels of digital exclusion 	<p>We will explore how best to deliver targeted work around digital exclusion to support with skills development and accessing employment.</p> <p>This would look to align with any existing activities, including those run by Opportunity Sheffield and the FACES Team and would be targeted in the areas of highest need.</p>	Digital exclusion	VCFS* TARAs**	2022-23
<ul style="list-style-type: none"> Increased understanding of current levels of ESOL provision 	<p>We will map current levels of ESOL and language provision within the area, both in terms of introductory courses, opportunities for progression and conversation clubs etc.. Based on our findings we may then explore options to support some additional provision.</p> <p>This will include conversations with VCFS organisations e.g. SAVTE (Sheffield Association for the Voluntary Teaching of English) and also the Council's FACES Team (Family Adult Community Education Services).</p>	Lack of ESOL provision	VCFS FACES Team SAVTE	December 2022

Page 141

Priority 6: Children, Young People & Families



Outcome / Impact	Action	Issue	Leads	Timescales
<ul style="list-style-type: none"> Better understanding of current youth provision and gaps 	<p>We will work with our local Youth Services Team and the VCFS to map current youth provision, understand existing gaps and areas of highest need and support with co-ordination of activities.</p>	Lack of youth provision	<p>Youth Services</p> <p>VCFS*</p>	October 2022
<ul style="list-style-type: none"> Increased engagement with young people Better understanding of current youth provision and gaps 	<p>We will support any engagement activities which are being undertaken with young people, particularly in areas of highest need, to better understand their views in terms of current youth provision and gaps.</p> <p>This will include linking with existing engagement arrangements including Sheffield Youth Cabinet.</p>	Lack of youth provision	<p>Youth Services</p> <p>VCFS*</p>	2022-23
<ul style="list-style-type: none"> Increased activities for young people 	<p>We will work with our local Youth Services Team and the VCFS to try and ensure youth provision is targeted effectively and meets the needs of young people, this could include exploring the option of funding some additional capacity to support work in areas of highest need.</p>	Lack of youth provision	<p>Youth Services</p> <p>VCFS*</p>	2022-23
<ul style="list-style-type: none"> Increased awareness of activities for children and families 	<p>We will support work to connect and engage with children and families to help identify gaps and opportunities in areas of highest need.</p> <p>This will include supporting improved communication, information sharing and awareness including through schools and nurseries</p>	Provision for children and families	<p>Children's Centre</p> <p>VCFS*</p> <p>Schools & Nurseries</p>	2022-23

*VCFS – voluntary, community and faith sector organisations
 TARAs – tenants and residents associations

5. Our Action Plan – Budgets



To support the delivery of our Community Plan the South LAC has a dedicated budget of £100,000 for 2022-23. The LAC is also able to influence a council budget of around £57,000 for targeted work around fly tipping and graffiti hotspots.

Where possible the South LAC will be looking to work in partnership to identify and secure “match funding”.

Funding 2022/23	Amount	This funding can be used for
South LAC Budget	£100,000	This funding must be spent on priorities and projects highlighted in the South LAC Community Plan.
Fly Tipping and Graffiti Fund	Circa. £57,000	This funding will be used to work with Environmental Protection services to identify specific projects to address fly tipping and graffiti hot spots.

Page 43

Ward Councillors also oversee two local budgets, Ward Pots and Community Infrastructure Levy (CIL), which may be able to support some of the activities outlined in this plan.

Ward Pots	Beauchief & Greenhill - £10,017 Gleadless Valley - £11,069 Graves Park - £5,183 Nether Edge & Sharrow - £7,614	This funding allocation is linked to deprivation levels. It can be used for specific projects in each Ward, based on local priorities.
Community Infrastructure Levy (CIL)	Beauchief & Greenhill - £117,985 Gleadless Valley - £85,980 Graves Park - £38,088 Nether Edge & Sharrow - £33,869	This funding is for supporting infrastructure projects as a result of development. There are a number of live projects in progress. The funding available has in part been accrued since the end of 2015-16..

6. Next Steps

The South LAC Committee will work to deliver the projects and priorities outlined in this plan; our commitments are:

- **We will work with partners**, including the VCFS (voluntary, community and faith sector) and local communities to deliver the priorities and projects outlined in our plan.
- **We will continue to listen and connect** with communities to understand their priorities
- **We will hold a minimum of 4 public meetings** a year to hear the views and concerns of local people and to provide updates on the Community Plan
- **We will work to shape and influence council services**, as outlined in the plan to help us respond to the needs of local people
- **We will aim to represent the interest of local people and organisations** with external organisations, as appropriate, to achieve the objectives outlined in the plan.
- **We will produce an annual report** to update on progress
- **We will remain committed to equality, diversity and inclusion** in delivering and monitoring the plan

Page 44

Equality, Diversity & Inclusion – Our Commitment

We have worked to engage with our diverse communities to inform and shape our Community Plan. This has included conversations with both individuals and the VCFS (voluntary, community and faith sector) who work with those who are less likely to have their voice heard.

We are committed to holding our public meetings and events in accessible buildings and will provide reasonable adjustments for people to ensure they can be involved in the work of our LAC.

As specific projects and areas of work are progressed, we will carry out further community engagement, monitoring and evaluation as needed. We will undertake proportionate Equality Impact Assessments to inform the development of projects and areas of work. Where appropriate, this will include targeted work with specific groups of people with shared characteristics, for example age, ethnicity or sexual orientation, to help us understand both needs and impact.

How to get in touch

If you would like to have a chat about anything in our Community Plan or if you have a question or query please do get in touch.

South Local Area Committee Team

Telephone: 0114 474 3635

Email: southlac@sheffield.gov.uk

South LAC Webpage - <https://www.sheffield.gov.uk/home/your-city-council/south-local-area-committee>



Alternative Formats

This document can be supplied in alternative formats, please contact the team to request a copy.

This page is intentionally left blank